



NATS Ltd
UK Aeronautical Information Service
Heathrow House
Bath Road
Hounslow, Middlesex TW5 9AT
Email: ais.supervisor@nats.co.uk
URL: http://www.ais.org.uk
Phone: 01223-497987 (Content - Duxford Aerodrome Manager)
Phone: 0191-203 2329 (Distribution - Communisis UK)

DUXFORD AERODROME - SPECIAL EVENTS FOR 2013.**1 General**

1.1 IWM Duxford's major events attract a variety of aircraft flown by pilots with wide ranging experience levels. This Circular is for ALL pilots using the aerodrome on the notified dates as shown in paragraph 2, detailing the changes to normal operations and setting out administrative arrangements in force.

1.2 The pilot in command is responsible for flying in accordance with normal safe operating practice within the privileges of their licence. No IWM Duxford Personnel accept liability for any damage, injury or accident whilst following these procedures, nor for any legal action resulting from doing so.

1.3 The following guidance has been compiled to promote safe flying to/from Duxford and to avoid infringement of controlled airspace. Please read these flying procedures carefully.

1.4 Duxford is surrounded by several noise sensitive areas; do not fly over any villages or habitation in the vicinity of the aerodrome.

1.5 Telephone AIS Free phone 0500-354802 to check for short notice airspace restrictions and get a full NOTAM briefing from www.ais.org.uk

2 Effective Dates 2013

- 11 May
- 8 June
- 20 July
- 28 July
- 1/2/3/4 August
- 17 August
- 14 September

3 Flight Rules To/From Duxford

3.1 All flights must be conducted under Visual Flight Rules (VFR).

3.2 The flying procedures and recommended routes in this document have been designed to avoid infringing Class A, C, D and E Airspace, by routing through Class G unregulated airspace. Whilst the following routes avoid controlled airspace, is strongly recommended that contact with Farnborough LARS is made on 132.800 MHz keeping a good lookout at all times.

3.3 The following inbound routes avoid infringements of Controlled Airspace around Stansted:

- a. From South to pass West of Stansted: Route LAM VOR - BPK VOR - BKY VOR - Duxford;
- b. From South to pass East of Stansted: Route Halstead VRP - Haverhill VRP - Duxford;
- c. From East: Route CLN VOR - Haverhill VRP - Duxford.

3.4 Departure Routes are the reverse of the above, see the annexes attached to this Circular. Note; annexes for these procedures are used only to show the recommended routes for planning purposes, and must not be used for navigation.

3.5 Remain clear of Class D Airspace. Pilots are requested to pay particular attention to navigation in the vicinity of London Stansted Airport, its associated Controlled Airspace and the Transponder Mandatory Zone (TMZ). Entry into Class D Airspace under VFR is permitted ONLY with clearance from the appropriate controlling authority. If lost or uncertain of position, call London Centre on 121.500 MHz.

4 Fixed Wing Arrival Procedures

4.1 Visiting aircraft must obtain a landing slot reference number for their arrival prior to each event, either by telephone on 01223-833376 or by E-mail to airtraffic@iwm.org.uk.

4.2 Inbound pilots are to call Duxford Information on 122.075 MHz 10 miles from the aerodrome prior to entering the ATZ. Pilots are to use their normal registration or call sign and shall pass the landing slot reference number on the initial call.

4.3 The grass and hard runways are to be treated as one runway and are not available for simultaneous operation in accordance with Rule 14 (2) regulations pertaining to 'landing after'. Pilots are expected to position themselves correctly in the circuit for their own spacing, and go-around if the runway is not clear.

4.4 Both runways will be in use with dual circuits.

4.5 NO OVERHEAD OR DEADSIDE JOINS. Pilots are to position to join directly downwind for the runway in use.

IN THE EVENT OF A RADIO FAILURE, DO NOT LAND AT DUXFORD UNLESS EXPERIENCING A FURTHER EMERGENCY.

5 Aircraft Parking

5.1 Visiting aircraft parking will be on the grass area abeam the tower, south of the taxiway. Additional parking may also be on the eastern jet pan. Pilots are to follow instructions given by the FISO and when told, follow the marshalls signals.

5.2 Fuel will be available throughout the event.

6 Helicopter Arrival/Parking Procedures

6.1 Same as for fixed wing arrivals.

7 RFFS and Safety

7.1 Maintain the best possible lookout at all times as you will be operating in a very busy environment both airborne and on the ground. Look after your passengers as they may not be familiar with airside dangers.

7.2 Rescue and Fire Fighting Equipment will be to RFF Category 2. Category 3 and 4 by prior agreement with the SAFO Mr Mick Webb on 01223-499331 (Landing slot bookings must then be made as normal).

7.3 Duxford has no navigational aids or lighting. The aerodrome authority reserves the right to close the aerodrome in adverse weather conditions. Adverse weather conditions are defined as cloud base below 600 ft and or visibility less than 1500 m.

7.4 In the event of a serious incident on the runway or aerodrome, Duxford will close until the incident is contained and safe operation can proceed. Pilots should ensure that they have sufficient fuel for a delayed arrival or diversion.

7.5 Pilots are reminded that it is their responsibility for the safety, security and contents of their aircraft at all times. IWM Duxford cannot accept responsibility for any lost or stolen property, or damage to your aircraft. It is advised that a tie down kit be brought in case of an enforced stay or strong winds.

8 Weather

8.1 IWM Duxford is not staffed or equipped for official Met Observations (METARs), hence there will be no TAF available for the aerodrome. Weather briefing for the Special Event should be based on the TAF's for Cambridge (EGSC). On the day unofficial weather and runway in use may be obtained on 01223-833376 from 1000 hrs local or on the IWM Duxford web page <http://duxford.iwm.org.uk/server/show/ConWebDoc.4202>

9 Customs and Immigration

9.1 A completed GAR form must be received prior to arrival, available from either IWM Duxford or UK Border Force.

9.2 Aircraft arriving from an EU airport outside the UK will need to give at least 4 hours notice. All other arrivals/departures must comply with the regulations as published, obtainable from UK Border Force or http://duxford.iwm.org.uk/upload/pdf/Customs_Form.pdf

10 Flight Planning

10.1 Flight planning facilities are available in the Control Tower building (first floor). Pilots who wish to file outbound plans are advised to carry these out on arrival.

10.2 Aircraft departing on an IFR flight plan will be given a clearance from the tower.

10.3 Where possible, priority will be given to flight planned flights.

11 Fixed Wing Departure Procedures

11.1 Departure information will be available from the tower on 01223-833376.

11.2 Aircraft departing VFR will route via the designated departure gate. Once outside the Duxford ATZ, contact Farnborough LARS North on 132.800 MHz.

Gate E1 - for Easterly and South Easterly (and Northerly if Easterly runway in use.)

Gate S2 - for Southerly and Westerly.

Gate W3 - for Westerly and Northerly.

Pilots are to conform to Rule 12 of the Rules of the Air Regulations by turning in the circuit direction for that runway after departure. Departing traffic must not cross the climb-out of the other runway.

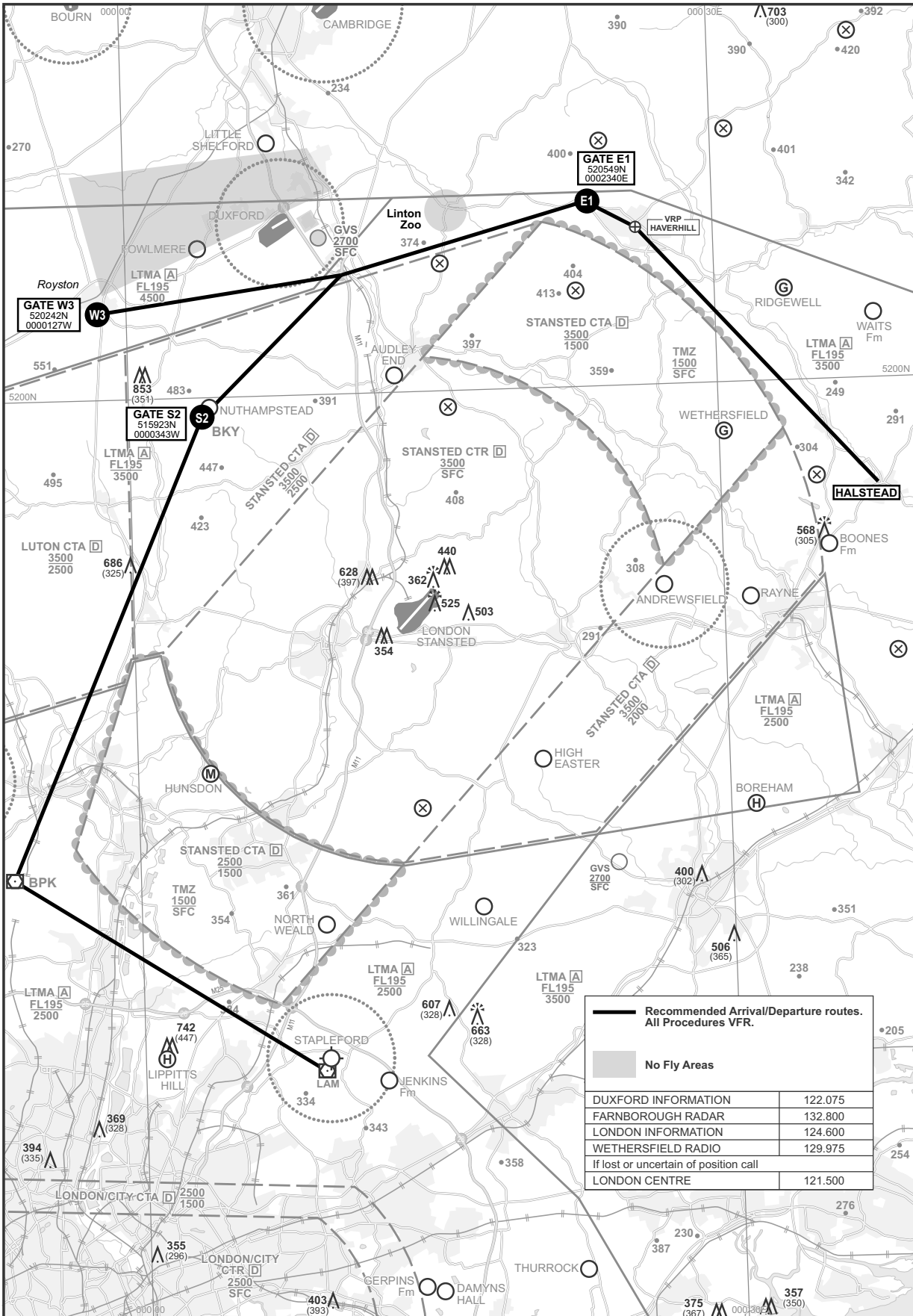
12 Helicopter Departure Procedures

12.1 Helicopters should call ready for departure from their current parking position. Departure instructions will be given from the tower.

13 Camping at the Aircraft Park

13.1 Not permitted at Duxford.

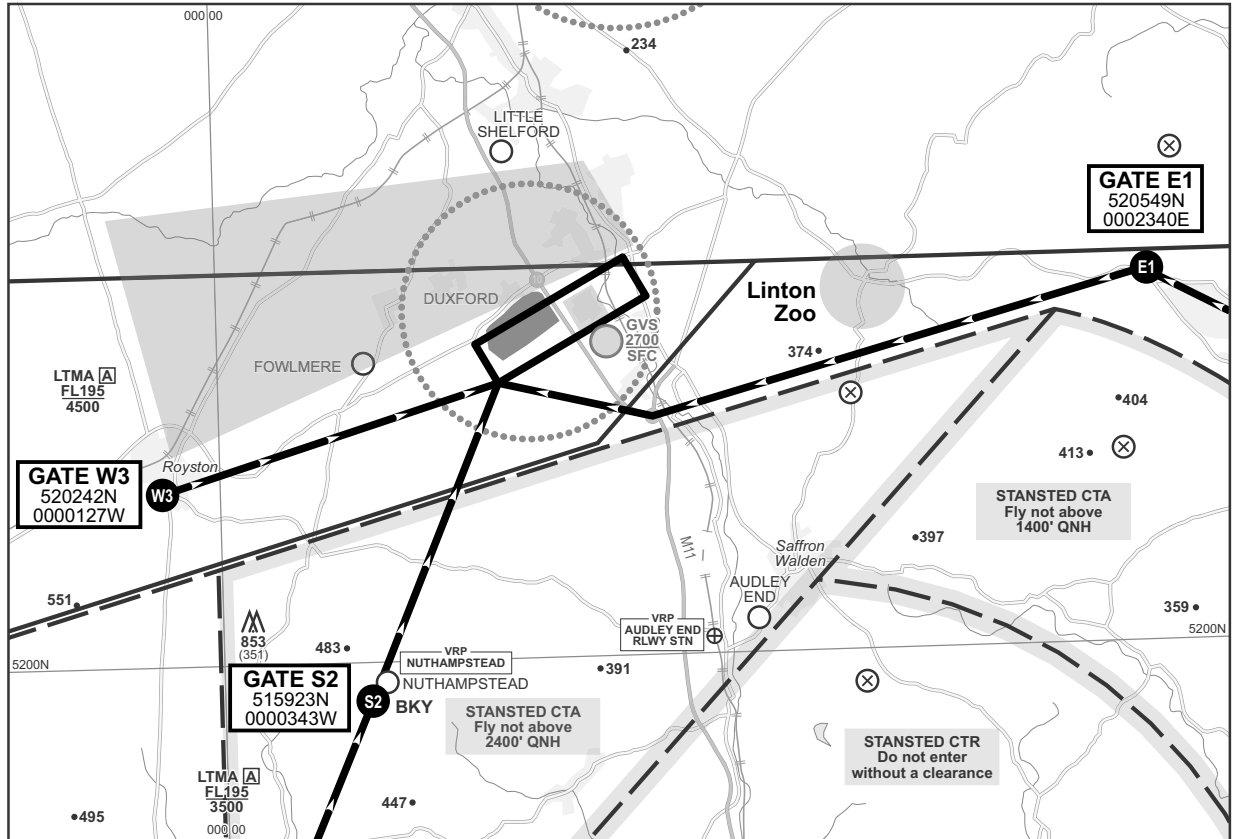
Annex A ARRIVAL/DEPARTURE ROUTES - DUXFORD



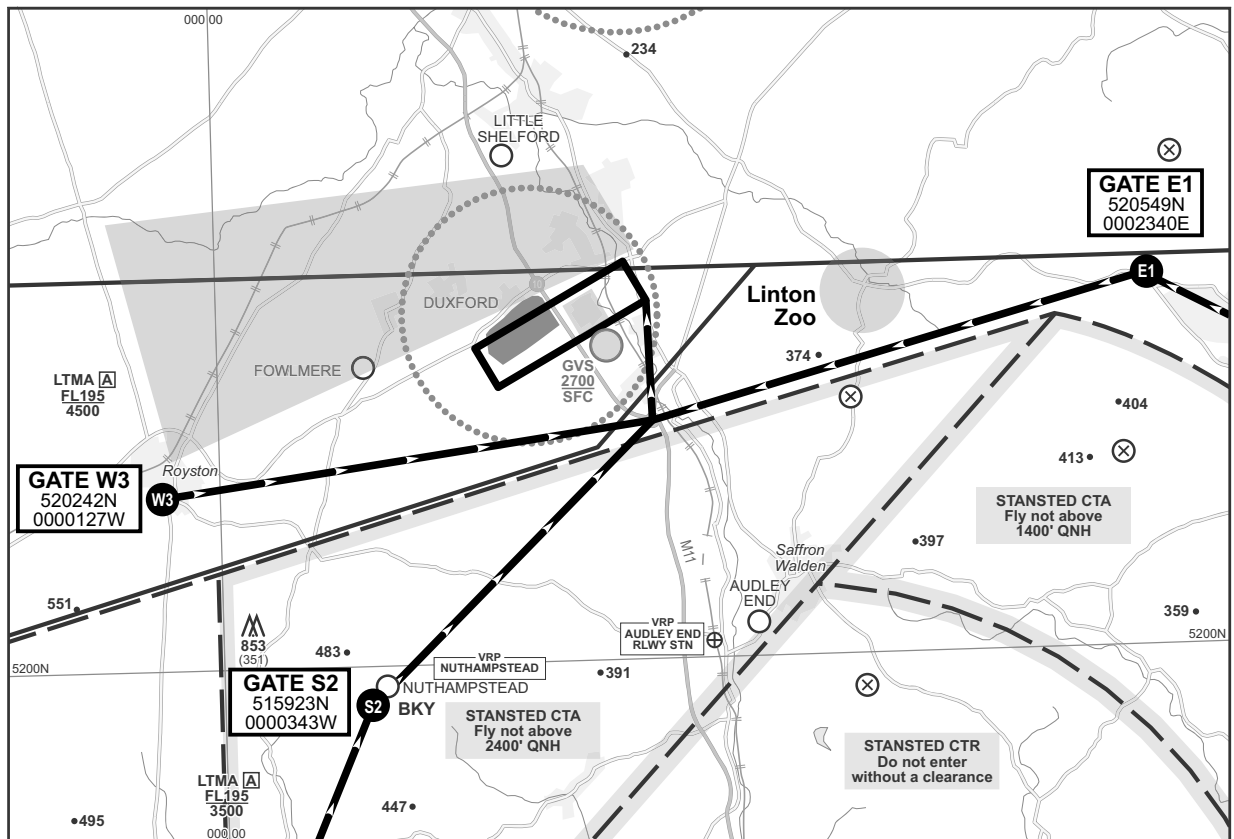
2013_30 Duxford Special Event Annex A 13 March 2013

Annex B

DUXFORD CIRCUIT JOINING PROCEDURES FOR RWY 24 LHC



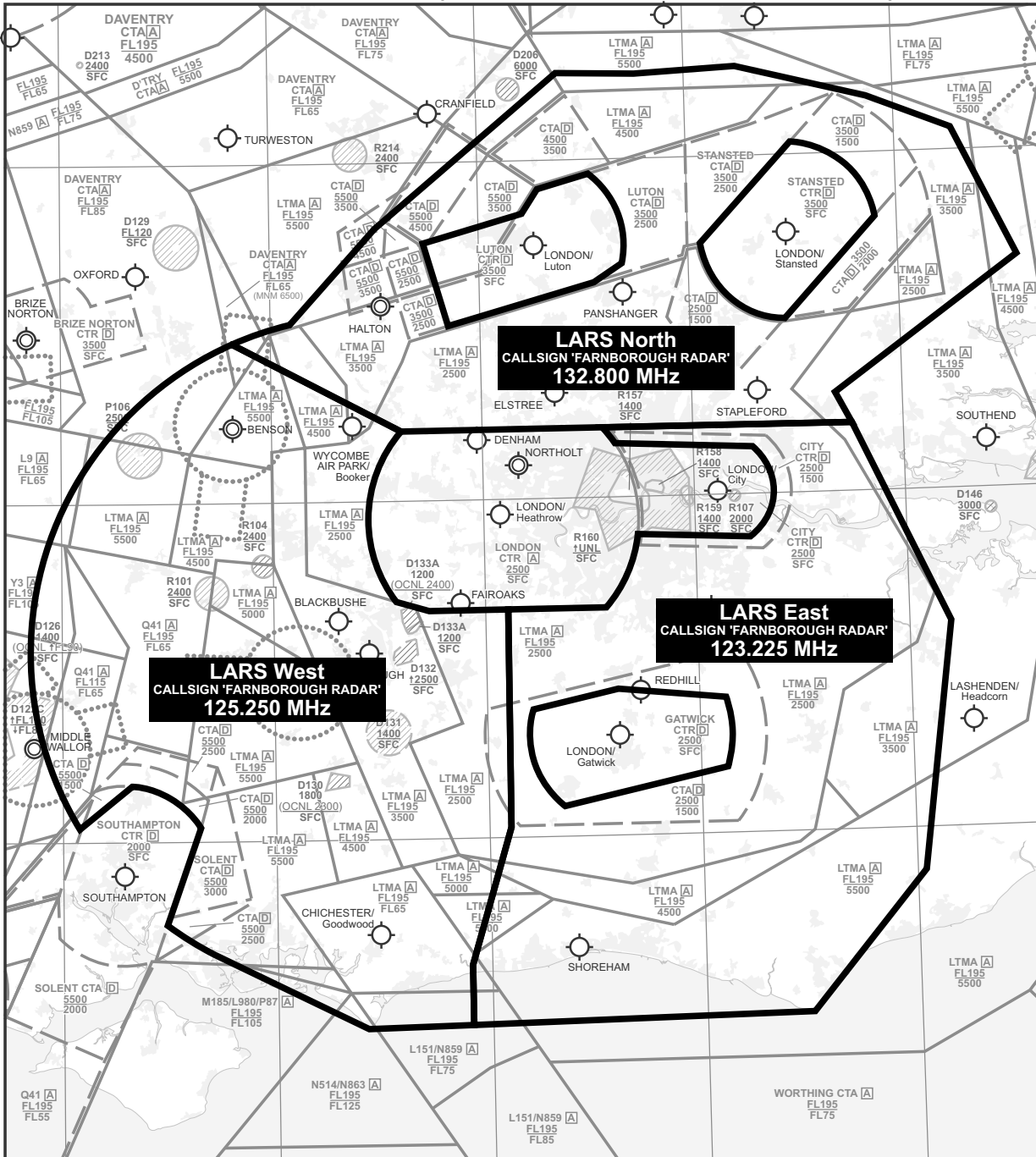
DUXFORD CIRCUIT JOINING PROCEDURES FOR RWY 06 RHC



2013_30 Duxford Special Event Annex B 13 March 2013

Annex C

FARNBOROUGH LARS (CALLSIGN FARNBOROUGH RADAR)



AERO INFO DATE 30 JAN 13