



# Duxford Airfield (EGSU) Information for Pilots *updated Jul 2023*

## Welcome

**It is imperative the following information is read carefully and in full**

Duxford Airfield is strictly **Prior Permission Required (PPR)** by telephone. The airfield hosts a variety of flying activities throughout the year with flying displays and high-energy practices **flown inside, close to and above the ATZ up to 4,500ft.**

**Training circuits are on application – be aware that approved circuit details may be asked to hold on the ground or in the local area, giving priority to practice displays and warbird activity during the circuit session.**

Address: IWM Duxford, Cambridgeshire, CB22 4QR

ATC Telephone: 01223 833376

ATC Fax: 01223 830410

Email: [airtraffic@iwm.org.uk](mailto:airtraffic@iwm.org.uk)

## Airfield Information

No lighting or navigation aids.

**Opening Hours (Local):** Mid-March to mid-October **1000 - 1800**  
Mid-October to mid-March **1000 - 1600**

**Frequency:** 'DUXFORD INFORMATION' 122.080 Duxford's designated operational coverage is 10nm

**Runways:** **06R/24L Paved** **TORA/TODA/ASDA/LDA 1199m**  
**06L/24R Grass** **TORA/TODA/ASDA/LDA 880m**

**FLIGHT INFORMATION SERVICE (FIS)** Station ident "Information" *Refer to CAP 774 for more info*  
Flight Information Service Officers (FISO) issue instructions **that must be complied with on the ground.** In the air, FISOs will offer traffic information and when closer to the field/in the circuit, accurate information about circuit traffic and runway occupancy. FISOs can offer Basic (*does NOT monitor your flight*) and Alerting Service.

**AIR GROUND COMMUNICATION SERVICE (AGCS)** Station ident "Radio" *Refer to CAP 774 for more info*  
AGCS Radio Station Operators cannot issue any instructions but can provide generic airfield information e.g. traffic and weather information.

**BASIC SERVICE:** *Refer to CAP 774 for more info*  
Advice and information useful for the safe and efficient conduct of flight, i.e. weather information, general airspace activity and any information likely to affect safety. **The avoidance of other traffic is solely the pilot's responsibility.**

Fees are paid in the Visitor Centre located next to the Airspace Hangar and are separate from any fuel charges which are to be paid on uplift. \*All cards accepted.

## Inbound

Establish communication on 122.080 when you have approximately 10nm to run to obtain airfield information, QFE (Duxford elevation 126ft amsl) and any pertinent traffic information.

Visiting aircraft should position to join the southerly circuit, downwind right-hand Runway 06 or downwind left-hand Runway 24. **OVERHEAD, CROSSWIND AND DEAD SIDE JOINS ARE PROHIBITED** due to the proximity of Fowlmere Airfield and war bird activity to the north of Duxford and/or in the northerly circuit.

**Arrivals from the north:** RWY 24 -route via Royston (west) to position Left hand down wind

RWY 06 -route via Sawston (East) to position Right hand down wind

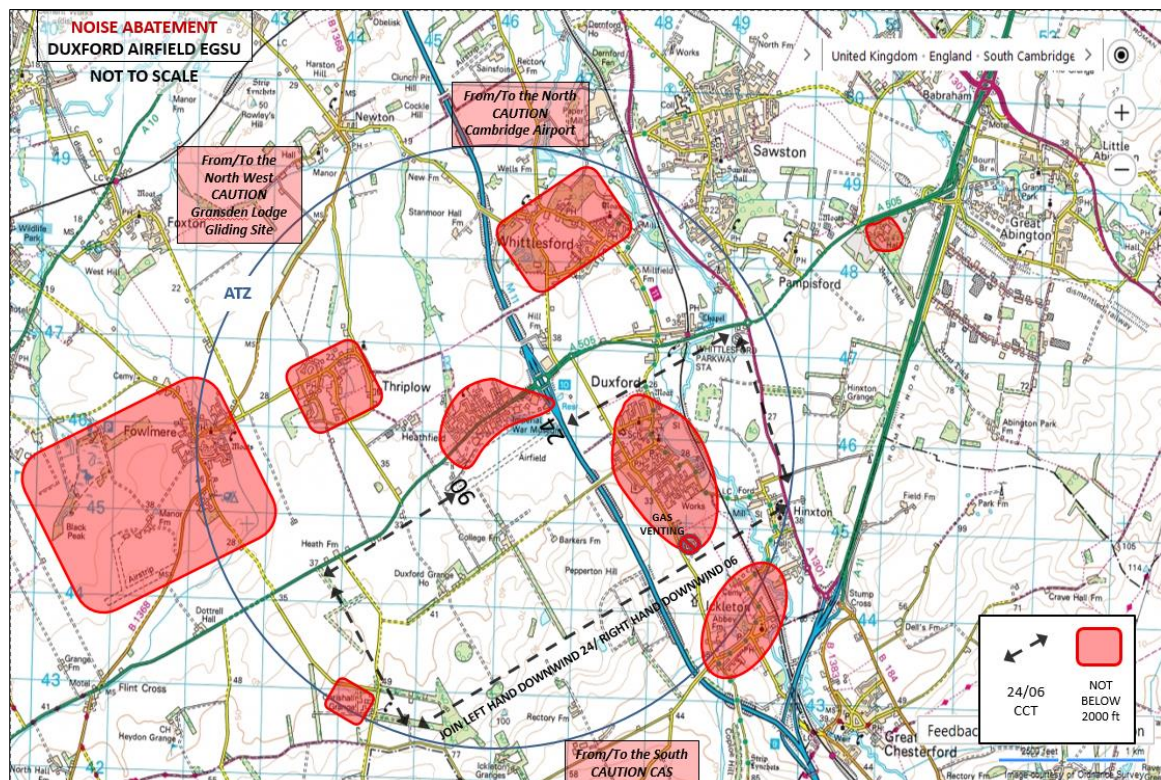
The grass and the hard runway are **not** available for simultaneous landing or take off. An aircraft on one must be at taxiing-speed before another aircraft can land or depart on the other. Land afters are **not** permitted.

**Landing is at your discretion.**

**Once landed, taxi instructions will be issued by the FISO which must be complied with.**

## **CAUTION**

Duxford Airfield lies in uncontrolled FIR, Class G airspace and is closely situated near the Stansted CTA and the London Terminal Manoeuvring Area (TMA) which is controlled Class D and Class A airspace. Please do not enter any controlled Airspace (CAS) unless you been given an explicit clearance to enter by the appropriate Air Traffic Controller. Please refer to an aeronautical map to avoid infringing controlled airspace.



**AREAS TO AVOID:** Duxford village (southeast of runway 24 threshold); neighbouring villages particularly Thriplow; Whittlesford; Fowlmere and its adjacent bird sanctuary; Linton Zoo and the Gas venting station (southeast)

**Nearby airfields and sites to be aware of:**

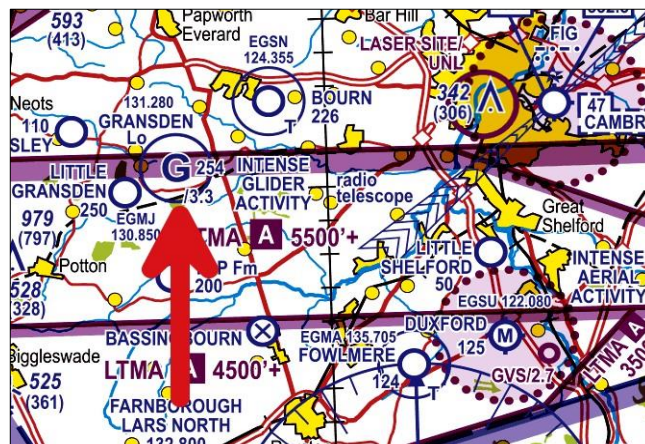
**FOWLMERE AIRFIELD (EGMA) 3nm west of Duxford**

Circuits at Fowlmere are conducted to the north of runway 07/25 to deconflict with Duxford circuit traffic.

**GRANSDEN LODGE GLIDING SITE 10nm north-west of Duxford**

Gransden Lodge state: *“Caution overflying Gransden Lodge glider site (521041N 0000653W, 10.5 nm QDM 120 to EGSU) below 3,300 ft AMSL during daylight hours. Gliders may be winch-launched up to the permitted altitude in a few tens of seconds at any time and most weather conditions using high-tensile-strength cable, leaving little time for avoiding action. The hazard continues for at least another 20 seconds as the cable descends under a small parachute. Many moving map systems do NOT depict glider winch launch sites and will NOT warn if you are approaching one. Beware also intense glider activity in the vicinity. See AIP ENR 5.5 for the full list of UK glider winch sites.”*

**For Information Only:**



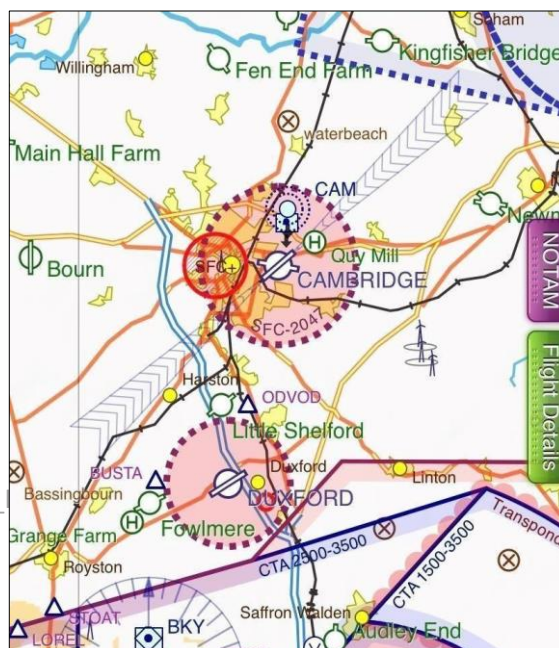
**CAMBRIDGE AIRPORT (EGSC) 7nm north of Duxford**

When intending to route/operate to the north of Duxford outside of the Duxford ATZ it is strongly advised that you establish communication with **Cambridge APP/RAD** due to **Cambridge ATSU** operations and **please note the Instrument Approach feathers.**

Cambridge ATC state *“This is especially pertinent for traffic joining right hand down wind for Runway 06 who will cross the Cambridge Final Approach Track/Climb-out when conducting their join. Cambridge ATC will endeavour to transfer you to Duxford ATC when clear of their conflicts so you can continue inbound to Duxford safely and without any undue delays.*

*Arriving pilots please be aware of the dangers of misidentifying Duxford Airfield. There have been 3 instances of aircraft between 2016 and 2019 landing at Cambridge Airport through mistaken identity.”*

**For Information Only:**



## Outbound

Obtain airfield information on 122.080 and request taxi where you will be given a holding point for your pre-flight checks. See image below for locations of holding points, **there is only one holding point sign on the north side of the taxiway for holding point Alpha, Bravo and Charlie.**

**Alpha (A24)** -runway 24L paved, *this holding point safe guards the undershoot of 24R grass*

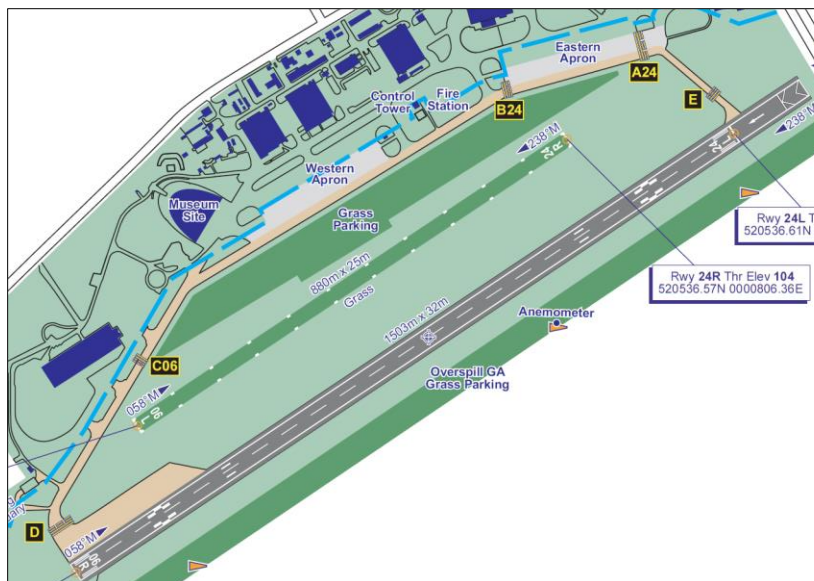
**Bravo (B24)** -runway 24R grass, *this holding point is abeam the threshold of 24R grass*

**Charlie (C06)** -runway 06L/R grass/paved, *this holding point safe guards the undershoot of 06L grass*

Once checks are complete, inform 'Duxford Information' that you are ready for departure. **Don't proceed past the holding point unless the FISO issues one of the following:**

"Report lined up" (Note: FISOs can't say "Line up and wait")

"Take off at your discretion".



**Departures to the north: RWY 24** -climb straight ahead for 5nm or at and above 2,000ft before turning north  
**RWY 06** - climb straight ahead for 2nm before turning north

## Airfield Services

RFFS Category 2 is provided. Category 3 to 5 is available with 48hr prior arrangement.

Avgas 100 LL and Jet A1 are normally available 1000-1700 local summer hours/ 1000-1530 local winter hours.  
Oil: S80, S100, W80, W100, 15/40.

Early and late movements may be arranged with prior notice and at an additional charge.

Refreshments are available within the museum.

Subject to marshaller availability, visiting aircraft can expect to be marshalled onto the eastern apron.  
Parking instructions will be issued by the FISO. If required please refer to the following link for marshalling

signals that pilots are expected to follow

<http://publicapps.caa.co.uk/modalapplication.aspx?appid=11&mode=detail&id=136>

Visiting aircraft must be insured in accordance with EU Regulation (EC) 785/2004. Art 7. Policies must include (where applicable) passenger legal liability insurance. Policies must also include the AV52E endorsement.

### **Customs and Immigration**

Customs and Immigration facilities are in place for all overseas arrivals as per current regulations. Download the GAR/[customs form here](#) and email to [ncu@hmrc.gsi.gov.uk](mailto:ncu@hmrc.gsi.gov.uk) and [bftteamsierra@homeoffice.gsi.gov.uk](mailto:bftteamsierra@homeoffice.gsi.gov.uk)

If inbound from the Channel Islands, Isle of Mann or Northern Island email your GAR to

[DE\\_ports@bedfordshire.pnn.police.uk](mailto:DE_ports@bedfordshire.pnn.police.uk)

If you are travelling on a Non-EU Passport please also complete the following document: [New Remote Immigration Clearance Form](#)

**For further information and advice telephone Duxford ATC on 01223 833376**