



IMPERIAL WAR MUSEUM DUXFORD

MEMORABLE EXPERIENCES
UNIQUE LOCATION







WELCOME TO IMPERIAL WAR MUSEUM DUXFORD

CONGRATULATIONS ON YOUR ENGAGEMENT. WE ARE DELIGHTED THAT YOU ARE THINKING OF CELEBRATING WITH US.

Set in the midst of some of the most iconic flying legends ever to take to the skies, you'll be in good company when you chose Imperial War Museum Duxford. We will work with you every step of the way to create your perfect day, always on hand to offer advice and support.

We hope this brochure will give you a taste of what to expect. Please give us a call on **01223 497501** to discuss your day in further detail and arrange an opportunity to view the facilities available here at Imperial War Museum Duxford.





A SHORT HISTORY

Duxford was built during the First World War as a flying school and was one of the first Royal Air Force stations. The last operational RAF flight took off from Duxford in 1961 and the future of the iconic site remained in the balance until 1977 when Cambridgeshire County Council joined forces with the Imperial War Museum and the Duxford Aviation Society to buy the runway and give the abandoned airfield a new lease of life.

Today Duxford is established as the European centre of aviation history. The historic site, outstanding collections of exhibits and regular world-renowned air shows combine to create a unique museum where the history really is in the air.







WEDDINGS & CIVIL CEREMONIES

Licensed for civil ceremonies from 10 to 650 guests, Duxford offers flexibility for any event and truly is a unique and memorable location.

Whether you opt for an intimate ceremony in our Airside Suite, with a private balcony overlooking Duxford's evocative airfield, or tie the knot with hundreds of your closest friends looking on, we will endeavour to take the stress out of your big day.



YOUR RECEPTION

What better way to celebrate than under the wings of Concorde?

AirSpace is a dramatic exhibition, telling the story of British and Commonwealth aviation from the earliest pioneers to the latest hi-tech aircraft. Home to over thirty aircraft, including the iconic Lancaster, Spitfire and Concorde, the Aircraft Hall is the exhibition centrepiece and a unique setting for a reception.

Alternatively you can celebrate in the illustrious American Air Museum, an extraordinary example of contemporary British architecture. Designed by Lord Foster, it has been the jewel in the crown of Duxford's hospitality since 1997, offering premium evening events that your guests will remember forever.

On behalf of Imperial War Museum Duxford we offer a professional catering service to ensure that your day is a resounding success.

You are our number one priority. Our unremitting attention to detail, coupled with our dedicated and experienced events team, ensure that we provide outstanding service at every occasion and exceed your expectations.

Our menus incorporate fresh seasonal ingredients, sourced from British suppliers. Our chefs are always happy to meet with you to share ideas and create a bespoke menu for your day, offering tasters along the way to whet your appetite...



We have plenty of complimentary parking but why not arrive in true style – there's no chance of getting stuck in traffic if you arrive by helicopter or jet off on honeymoon. We can even arrange for a sky writer to seal your love in the clouds or a fly past from your favorite aircraft.



RADHIKA FLOWERS



We can create beautiful, unique and stylish flowers for your wedding day. From the traditional to the contemporary we will help you create your perfect look. We offer a professional, friendly service catering for all your floristry needs.

Please call 01223 847808 to arrange an appointment with our wedding specialist.

Venue/Home visits and out-of-hours available.

Telephone: 01223 847808

Email: radhikaflowers@btconnect.com

RADHIKA FLOWERS, 5 ANSTEY WAY,
TRUMPINGTON, CAMBRIDGE CB2 9JE



FOCUSFIRST PHOTOGRAPHY

CONTEMPORARY IMAGES OF CHARACTER

Contact Nicola 07833 102439 01223 311960 nicola@focusfirst.co.uk
www.focusfirst.co.uk



THE JOHN BARLEYCORN



This historic village inn first opened its doors in 1660 as a coaching inn on the Cambridge to London old road.

The "Barleycorn" has gained an international reputation for good beer, wine, food and service over 3 centuries. During the last 2 world wars it became the favourite watering hole for the brave young airmen stationed at nearby RAF Duxford, now the Imperial War Museum. The American squadron who were stationed here actually built their own dance hall at the rear of the inn, to entertain the local spinsters of the parish.

We have 4 boutique en-suite rooms, all on the ground floor, converted from an old barn in the walled courtyard. Shortly after the reopening in March 2009, we were awarded 4* Highly Commended, by the English Tourist Board.



We are proud to have won several awards for the quality of our food / ale and service.

The pub was recently voted Pub of the year and came first, nationally, for the quality of our cask ale.

The owners and the Barleycorn team, are committed to outstanding, friendly service. Our food is freshly prepared by our Head chef and his two assistants, and the Bar has recently been refurbished, exposing the original quarry tiled floors and old beams.

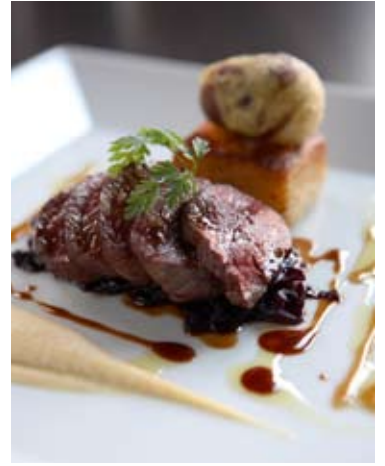
Please visit our website www.johnbarleycorn.co.uk to view our latest menu and wine list.

With a roaring log fire in the winter months, and our courtyard garden in the summer, we are delighted to provide a warm friendly welcome in this atmospheric village inn, and do hope to have the pleasure of your company.



THE JOHN BARLEYCORN, MOORFIELD ROAD, DUXFORD, CAMBRIDGE CB22 4PP
Email: info@johnbarleycorn.co.uk Tel: 01223 832699 Fax: 01223 839169
www.johnbarleycorn.co.uk

HOTEL FELIX CAMBRIDGE



Hotel Felix, Cambridge's first contemporary hotel, offers stylish, elegant accommodation and award-winning, critically acclaimed food. The 52 sumptuous bedrooms provide the perfect base for attending a local wedding and spending a long weekend exploring historical Cambridge.

A striking combination of traditional Victorian architecture and modern, twenty-first century additions, Hotel Felix stands in spacious surroundings with a large terrace for al fresco dining and drinks and a beautiful gazebo, perfect for afternoon tea or even a private dinner.

Hotel Felix is situated just over a mile from the hub of Cambridge City centre, with easy access to the M11 and A14 North and only a 15 minute drive from Duxford Imperial War Museum. The hotel also boasts free parking for residents and a 2AA Rosette restaurant.

tel: 01223 277977 email: help@hotelfelix.co.uk www.hotelfelix.co.uk



MAC HAIR STUDIO

Mac Hair Studio specialise in bridal and prom hair styling with a personal service for you and your party.

We offer you the opportunity to visit us, discuss your ideas and practise with your chosen style. With our experienced colour advice we can enhance your look.

We even have a selection of tiaras and headdresses for you to try out so you'll feel completely confident on your day.

Your day is hectic enough so, if you'd rather, we can visit you at home.

We also specialise in all aspects of colouring and perms.

38 CHURCH STREET
WILLINGHAM
CAMBRIDGE
CB24 5ES

Telephone: 01954 260224
www.machairstudio.co.uk

ACME TRANSPORT SERVICES



A friendly reliable family business that specialises in
Chauffeur driven cars,
MPVs, minibuses and coaches

Niche transport for weddings and parties

Social and sporting events
Business and Corporate travel

Wheelchair accessible minibuses
Air conditioned vehicles

Seat belts fitted in all vehicles*
*excluding historic / heritage vehicles

tel: 01279 871 707 fax: 01279 870 360
email: sales@acme-transport.com
www.acme-transport.com



RADISSON BLU

Welcome to the Radisson Blu Hotel London Stansted Airport, the ONLY hotel directly linked to the terminal via a covered walkway.

Home to Europe's first Wine Tower! Complete with real life wine angles, you have to see it to believe it. One visit will fire your enthusiasm for future stays.

Call us now get a quote for your accommodation requirements. To get access to the special wedding rates please refer "Imperial War Museum Duxford".



WALTHAM CLOSE, LONDON STANSTED AIRPORT, STANSTED, ESSEX CM24 1PP
Telephone: 01279 661 012 www.radissonblu.co.uk

DEESIGNS FOR LOVING...

CONTEMPORARY WEDDING CAKES

Creative and bespoke designs
Many flavours available

Free design consultation & cake tastings
luxurious edible favours



www.deesignsforloving.co.uk

info@deesignsforloving.co.uk

01233 830628 / 07957 188662



HAMILTON LODGE

GUEST HOUSE

Hamilton Lodge is an independent guest house, situated approximately one mile from the historic city centre with its famous colleges and is close to the river Cam and surrounding parks.



Hamilton Lodge boasts an excellent location easily within reach of all the city's well-known colleges, the River Cam and shops. Just a 10-minute stroll along the river takes guests into the city centre.

Most of the comfortable guest rooms are en-suite. Guest rooms with queen size and king size beds are also available. Each of the rooms includes a TV, hairdryer, telephone and tea/coffee making facility. Ground floor guest rooms can be available, if requested during the time of booking.



156 CHESTERTON ROAD, CAMBRIDGE, CAMBRIDGESHIRE CB4 1DA

Tel: 01223 365664 Fax: 01223 314866

Email: hamiltonhotel@talk21.com

www.hamiltonhotelcambridge.co.uk

MERIDIEN LINE TRAVEL



Established in the mid 1990's, Meridian Line Travel has become one of the regions leading coach hire specialists. A testament to this being our ever expanding customer base of Educational, Corporate and Private establishments.

Built on a firm foundation of customer care and a high quality of service, Meridian Line Travel prides itself on providing you, the customer, with the service you want.

With our selection of modern vehicles having a variety of seating capacities, we can accommodate any number of passengers on journeys from local trips to European tours.

Ever conscious of our customer's safety and comfort, all Meridian Line Travel coaches are fitted throughout with seatbelts and are subjected to a rigorous 96 point safety inspection every six weeks.

Meridian Line Travel can also provide **wheelchair accessible coaches**, with helpful, understanding drivers, making your journey a pleasure.

Our uniformed driving staff are chosen, not only for their standard of driving ability, but for their kind, friendly and courteous nature and above all, their professionalism.



UNIT 2, WIRELESS STATION PARK, CHESTNUT LANE, BASSINGBOURN, ROYSTON, HERTFORDSHIRE SG8 5JH
Tel: 01763 241999 Fax: 01763 245697 Email: info@mltravel.co.uk
www.mltravel.co.uk



www.clarelouisebridal.co.uk

CLARE LOUISE
Brides & Maids



MARK ALAN
Formal Hire

Photography by www.randallandboden.co.uk

OPENING TIMES:
Mon 10am - 8pm • Tues - Fri 10am - 4pm • Sat 10am - 5pm
Appointments Appreciated

NOW AT
176 High Street, Cottenham, Cambridge CB24 8RX
01954 252233



LOCATION MAP AND DIRECTIONS

Next to junction 10 of the M11, just 15 minutes from Cambridge and 40 minutes from the M25. Ample free parking.

We would like to thank the following for their assistance when producing this brochure:

Imperial War Museum
 STORM Photography
 Mr & Mrs Dippel
 Historic Aircraft Collection
 The Fighter Collection
 de Havilland Support
 Air Displays



We are very grateful to the businesses whose advertisements appear in this publication. As a mark of our gratitude we would like to draw the attention of the readers to their details and announcements. We are required to make it clear however that neither Network UK nor the distributor can accept responsibility for any services or workmanship that they may undertake. This brochure was produced by Network UK, Communications House, Hillhouse Business Park, Fleetwood Road North, Thornton Cleveleys, Lancashire FY5 4QD
 Tel: 01253 820011 Fax: 01253 682201 Email: enquiries@networkuk.net Web: www.networkuk.net www.registerofficeweddings.co.uk

Imperial War Museum Duxford
Cambridgeshire
CB22 4QR

Telephone
01223 497 501

Email
duxfordevents@digbytrout.co.uk

Website
<http://duxford.iwm.org.uk>